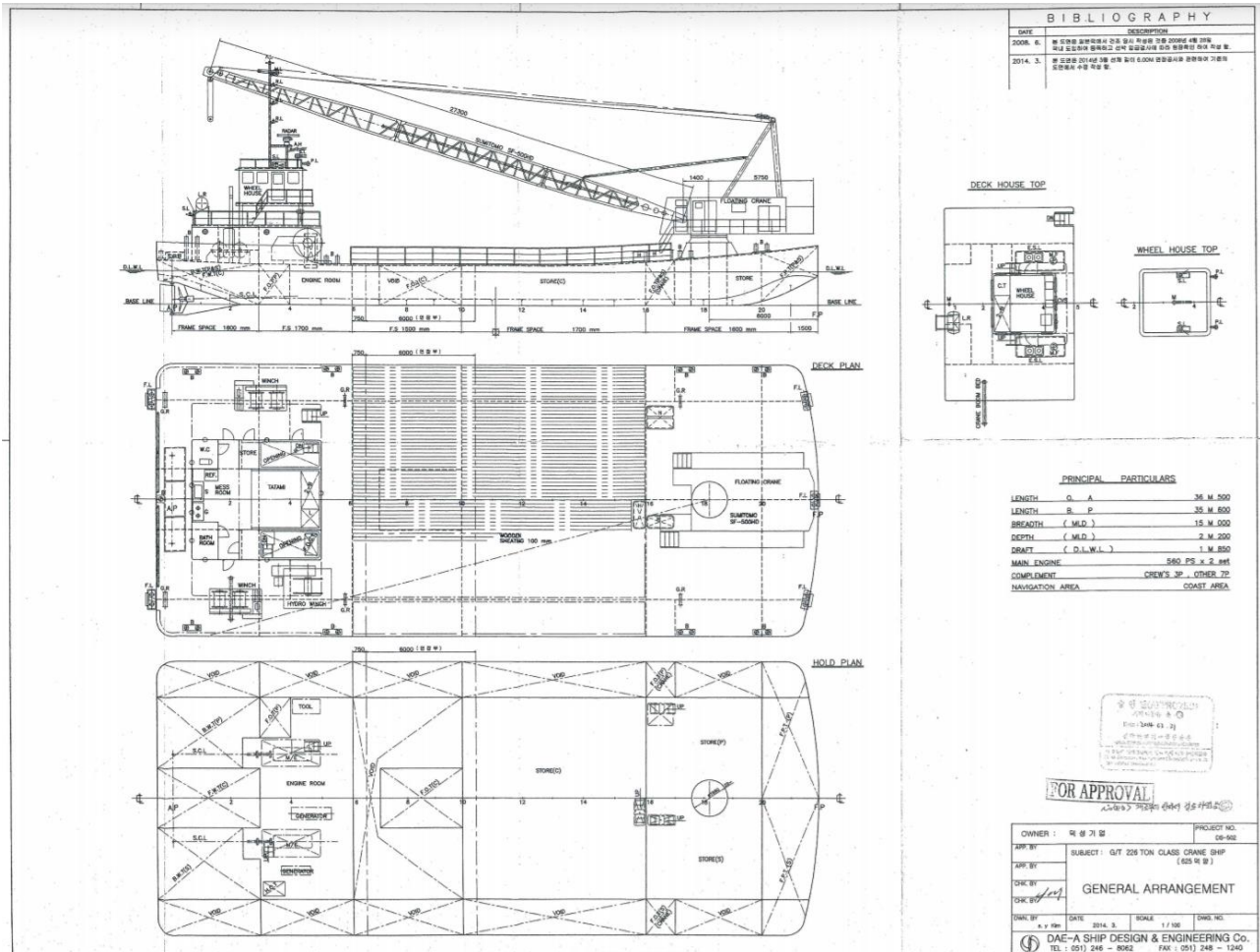


“Crane Barge”



Blt. : November, 1995, JINHAKSOTAK SHIPYARD CO., LTD., Japan
LOA/B/D : 38.00m x 15.00m x 2.20m
G/Tonnage : 226 Tons
Registered in : Busan, Korea
Main Engine : DOOSAN MAN, 1,440hp(720HP X 1,800RPM x 2sets)
Speed : 10knots @ MCR
 8knots @ 85% MCR

Crane

Model : SUMITOMO SF – 500HD
Manufacturer : SUMITOMO
Engine Type : SUMITOMO SF – 500HD
Boom Capacity : 100.00 ton
Boom Length : 27.00m
Fuel & Consumption : MGO, 35ltr/hr

Deck Machinery

Hook : 70.00tons, 25.00tons
Anchor Winch(4EA) : Bow : 1.00ton / Stern : 1.00ton(Wire Type)
Wire : 24SQ x 300m

Generator

No. 1 G/E : YANMAR 6HAL-N, 100PS x 1,200rpm, 80KVA, 10ltr/hr
No. 2 G/E : AIR-MAN W04D, ISUZU A 6861, 100PS x 2,000rpm
No. 3 G/E : DAEWOO MAN DB33, 43PS x 1,800rpm, 26KVA

Tank

MGO : 20,000ltr(3 Tanks)
B-A :
Fresh Water : 30.00tons(1 Tank)