

## “600 Ton Floating Crane”



Blt. year : 1981, Japan(for Barge) / 2002(for Crane)  
Builder : Hashimoto Shipbuilding Co., Ltd. , Japan  
LOA/B/D : 56.50m(L) x 27.00m(B) x 4.50m(D)

### Main Hoist

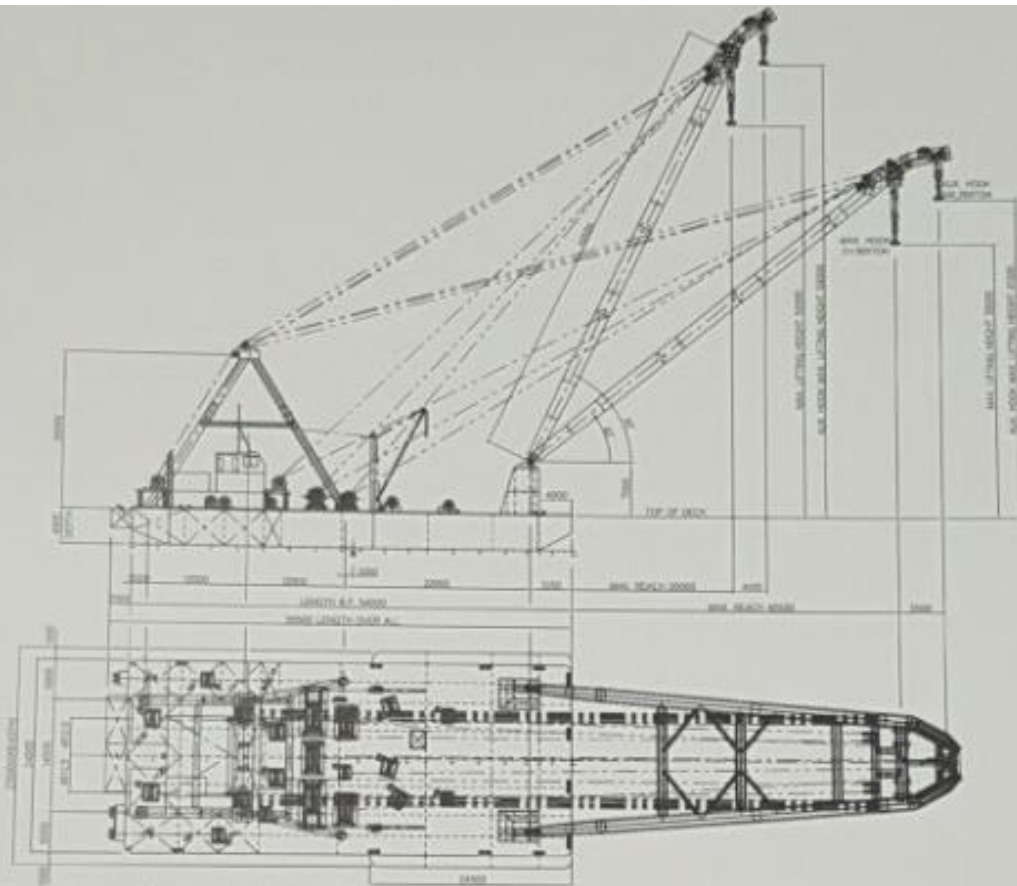
Main Hook : 2 x 300ton(600 ton)  
Out Reach : 20.0m

### Aux. Hoist

Aux. Hook : 1 x 200 ton  
Out Reach : 24.0m

### Winch System

Main Hook : 2 x 30ton / 2 x 20 ton  
Aux. Hook : 1 x 30 ton  
Mooring Winch : 5 x 15ton  
Anchoring Winch : 2 x 15 ton  
Derrick : 2 x 10ton  
Assist Winch : 2 x 7.5ton



Lifting Capacity Table(하중 인양시 각 조건)

Items	Condition		1	2	3	4	5	6	7	
Main Hook Lifting	Boom Angle (물각도)	DEG	70°	65°	60°	55°	50°	45°	40°	
	Lifting Capacity (인양중량)	TON	600	600	470	400	320	250	200	
	Outreach (작업거리)	M	15.2	20.0	25.7	31.0	36.0	40.0	43.6	
	Lifting Height (인양높이)	M	53.2	51.2	48.1	44.5	40.0	35.5	31.4	
	Draft(중심)	Bow (선두)	M		3.772	3.485	3.379	3.171	2.958	2.807
		Stern (선미)	M		1.398	1.520	1.534	1.642	1.769	1.859
Amidship (중영)		M		2.585	2.502	2.456	2.406	2.364	2.333	
No Lifting Load	Boom Angle (물각도)	DEG	70°	65°	60°	55°	50°	45°	40°	
	Outreach (작업거리)	M	15.2	20.0	25.7	31.0	36.0	40.0	43.6	
	Draft(중심)	Bow (선두)	M		1.370	1.452	1.526	1.596	1.661	1.720
		Stern (선미)	M		3.102	3.015	2.936	2.862	2.794	2.731
		Amidship (중영)	M		2.236	2.234	2.231	2.229	2.227	2.225
	Lifting Capacity (인양중량)	TON	250	200	180	150	130	120	110	
Aux	Outreach (작업거리)	M	19.0	24.0	30.3	36.0	41.3	46.0	49.2	
	Lifting Height (인양높이)	M	61.5	59.0	55.7	51.5	46.7	41.3	36.8	